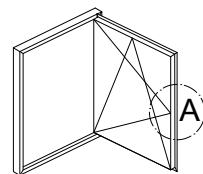


Oversigt over greb med lås siden 1978

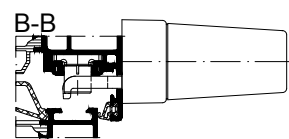
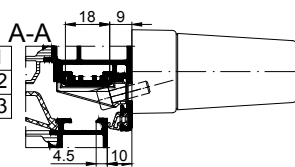


Montering af greb med lås

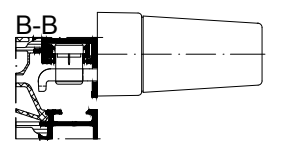
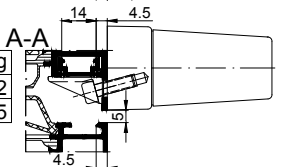
2004 - XXXX	
Schüco AWS Aufschlagend	
Mitnehmer	xxxxxx
Verstärkungswinkel	xxxxxx

SCHÜCO serietegnelse (tysk)
medbringer
forstærkningsvinkel

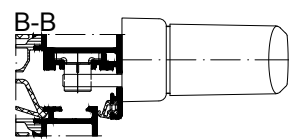
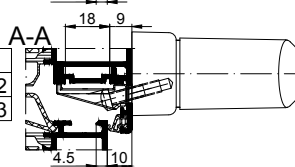
2004 - heute	
Schüco AWS Aufschlagend	
Mitnehmer	218132
Verstärkungswinkel	243213



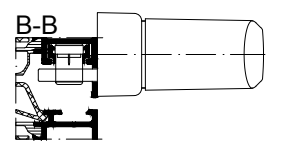
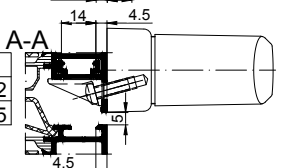
2004 - heute	
Schüco AWS Flächenbündig	
Mitnehmer	218432
Verstärkungswinkel	218285



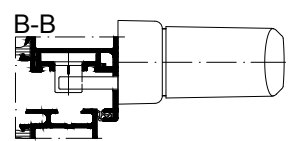
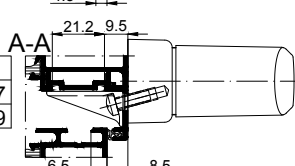
1993 - 2007	
Royal S Aufschlagend	
Mitnehmer	218132
Verstärkungswinkel	243213



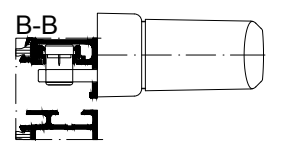
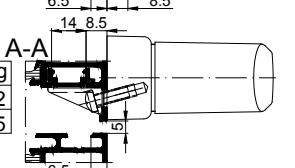
1993 - 2007	
Royal S Flächenbündig	
Mitnehmer	218432
Verstärkungswinkel	218285



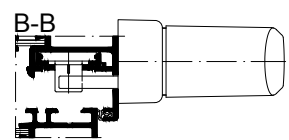
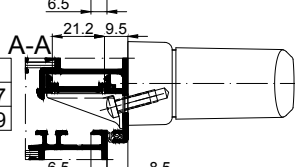
1984 - 1996	
ISKOTHERM Aufschlagend	
Mitnehmer	208227
Verstärkungswinkel	218289



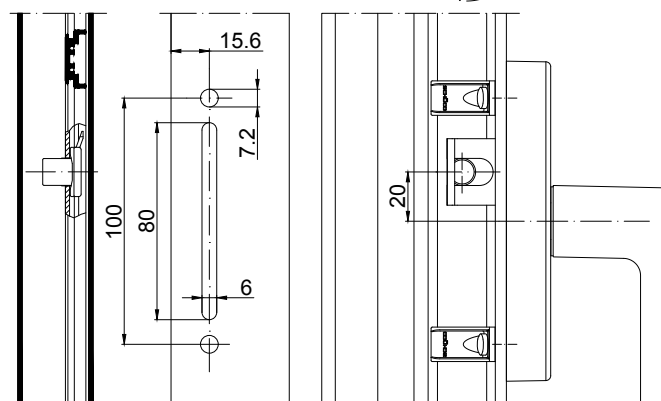
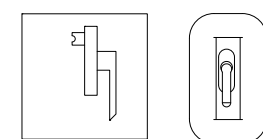
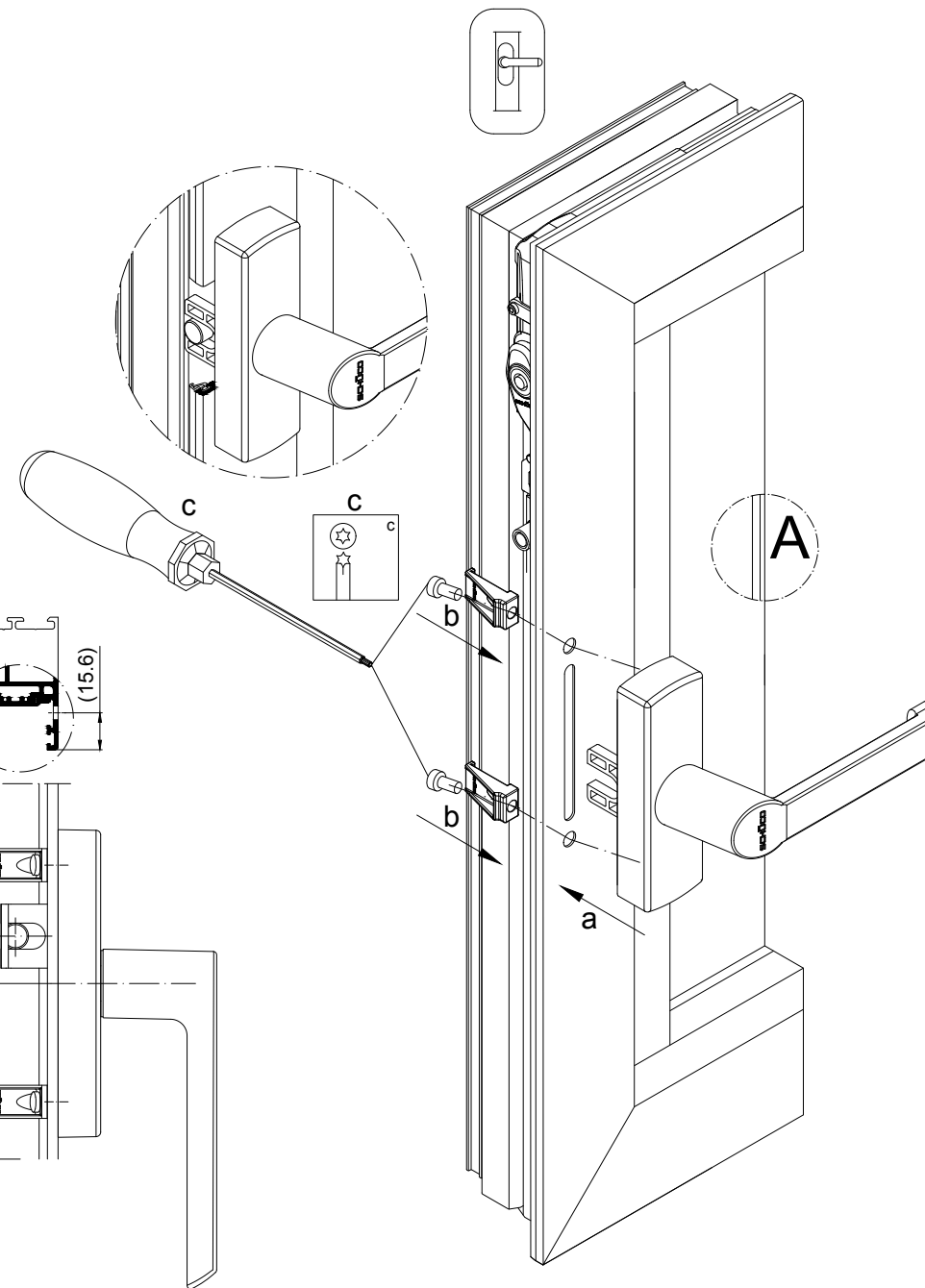
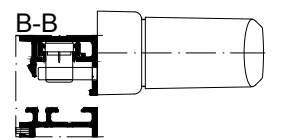
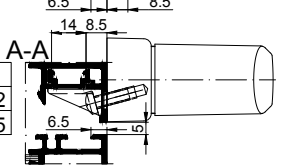
1984 - 1996	
ISKOTHERM Flächenbündig	
Mitnehmer	218432
Verstärkungswinkel	218285



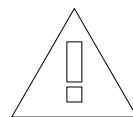
1978 - 1996	
Royal Aufschlagend	
Mitnehmer	208227
Verstärkungswinkel	218289



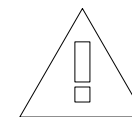
1978 - 1996	
Royal Flächenbündig	
Mitnehmer	218432
Verstärkungswinkel	218285



1. Grebet med lås bringes i drejeposition.
2. Grebet med lås skal alt efter udførelse svinges gennem slidesen over medbringeren eller skubbes på.
3. Grebet med lås fastgøres med de to forstærkningsvinkler.



Udskiftning og indstilling af beslagdele må kun udføres af fagpersonale.



Beslagsmontage - Reparationsvare - Greb med lås oversigt fra 197

K1018393

0100

Schüco AWS